



Installing MacBook Pro 15" Retina Display Mid 2012 Logic Board Assembly

Written By: Brett Hartt



TOOLS:

- [Spudger \(1\)](#)
- [T5 Torx Screwdriver \(1\)](#)

SUMMARY

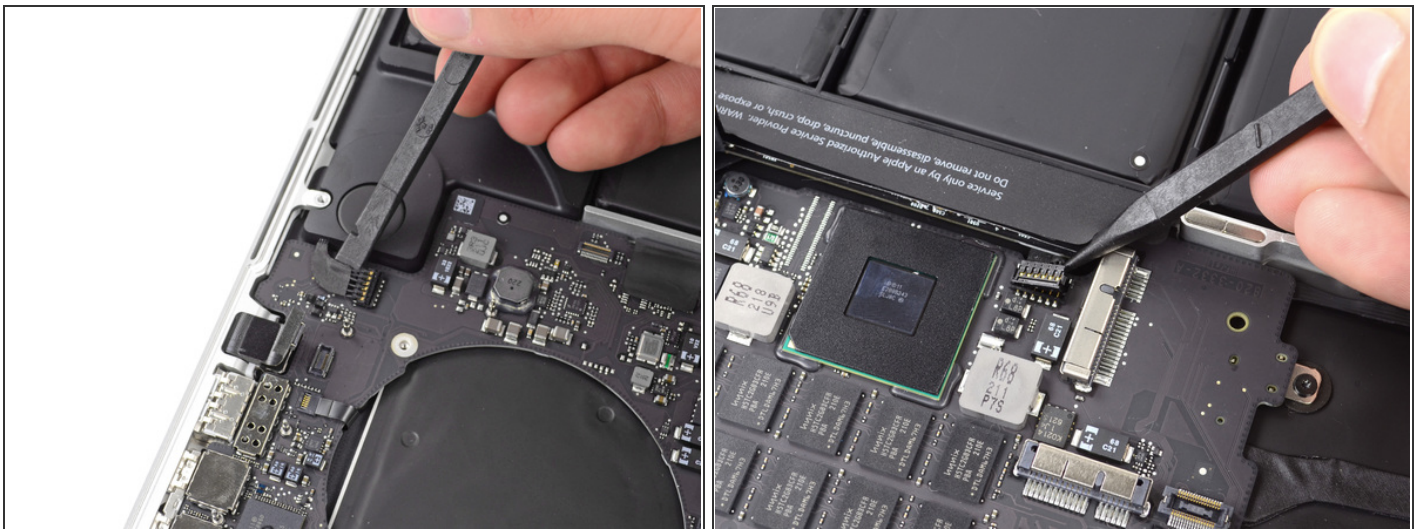
Pre-req only.

Step 1 — Logic Board Assembly



- Use the flat end of a spudger to pry the headphone jack connector up from its socket on the logic board.

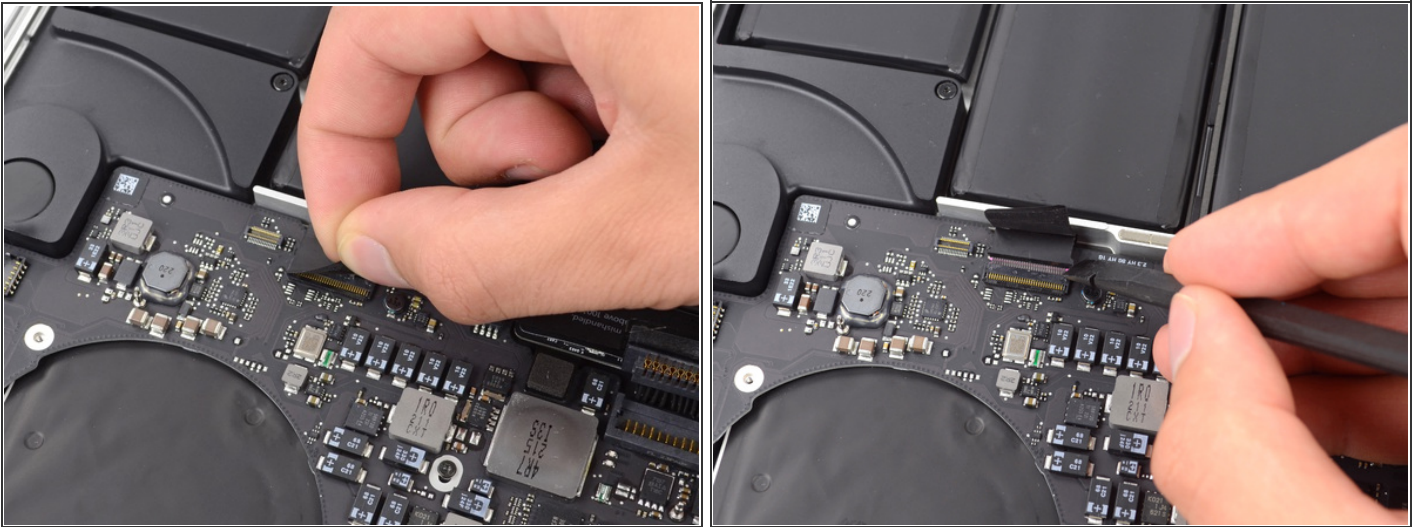
Step 2



- Use the flat end of a spudger to pry the left speaker connector up and out of its socket on the logic board.
- Use the tip of a spudger to pry the right speaker connector up and out of its socket on the logic board
- Be sure to pry on the cable head, and not on the socket itself. Prying on the socket may cause it to separate from the logic board.



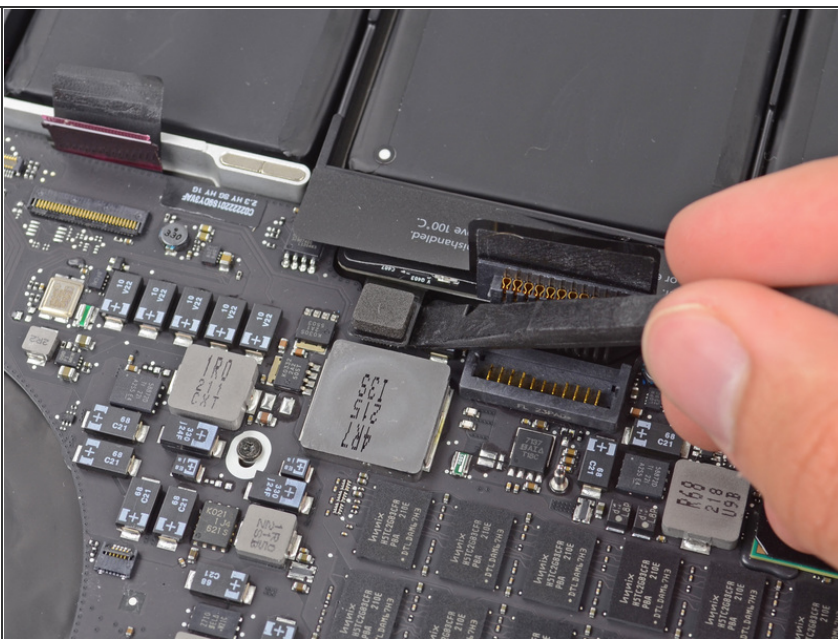
Step 3



- Use the flat end of a spudger to flip up the retaining flap on the keyboard ribbon cable ZIF socket.
- Be sure you are prying up on the hinged retaining flap, **not** the socket itself.
- Use the flat end of a spudger to pull the keyboard ribbon cable out of its socket.

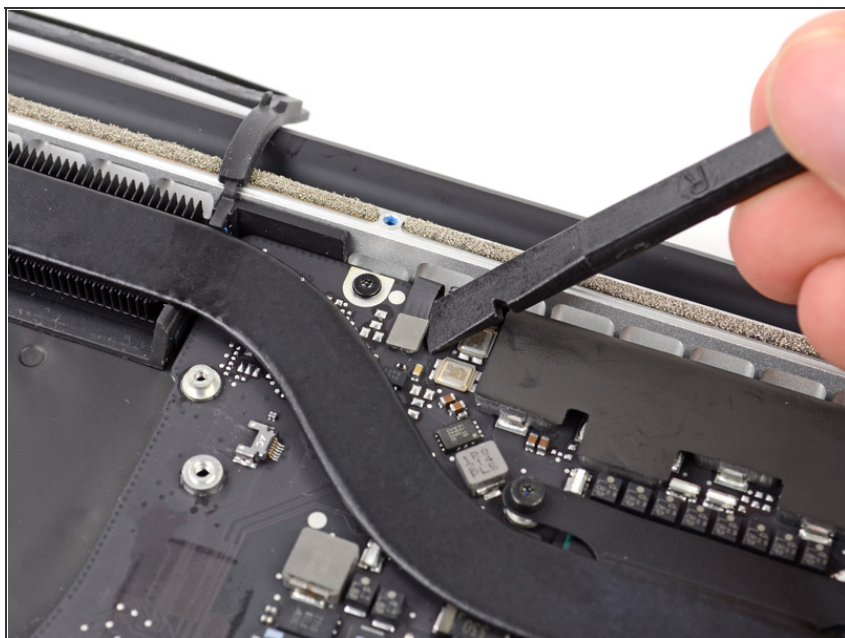


Step 4



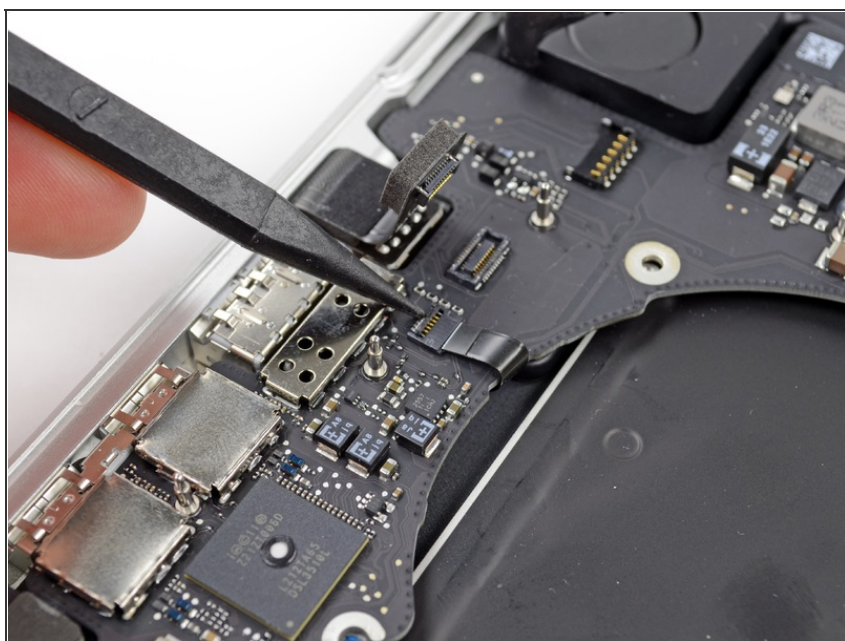
- Use the flat end of a spudger to pry the battery indicator connector up from its socket on the logic board.


Step 5



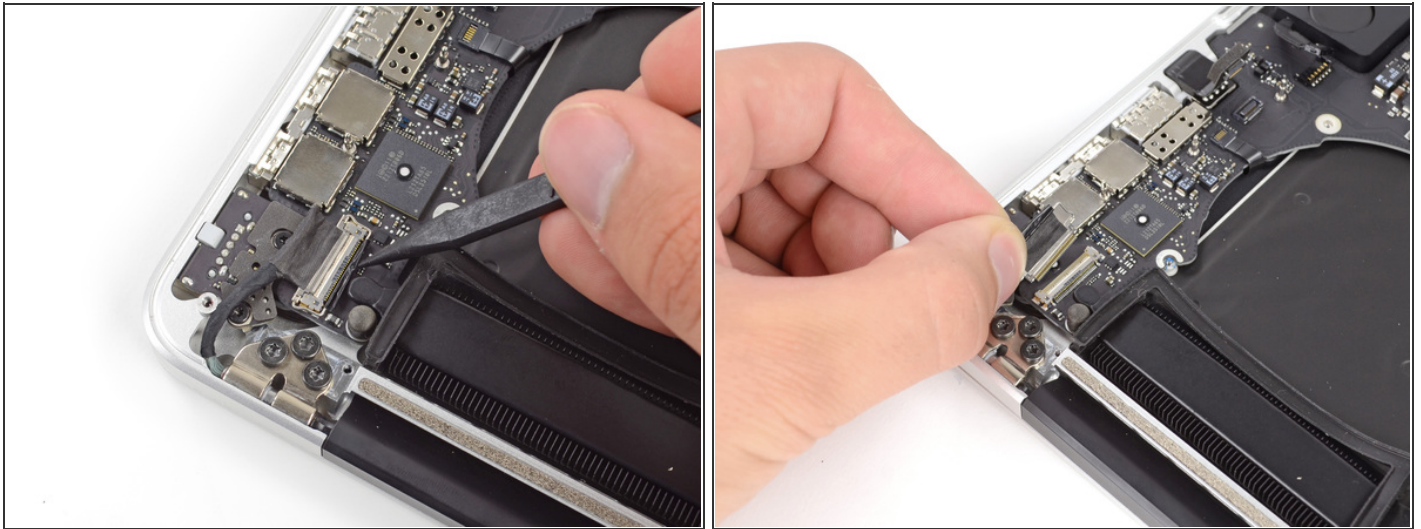
- Use the flat end of a spudger to pry the keyboard backlight connector up from its socket on the logic board.

Step 6



- Use the tip of a spudger or your fingernail to flip up the retaining flap on the microphone ribbon cable ZIF socket.
- Be sure you are prying up on the hinged retaining flap, **not** the socket itself. 
- Pull the microphone ribbon cable out of its socket.

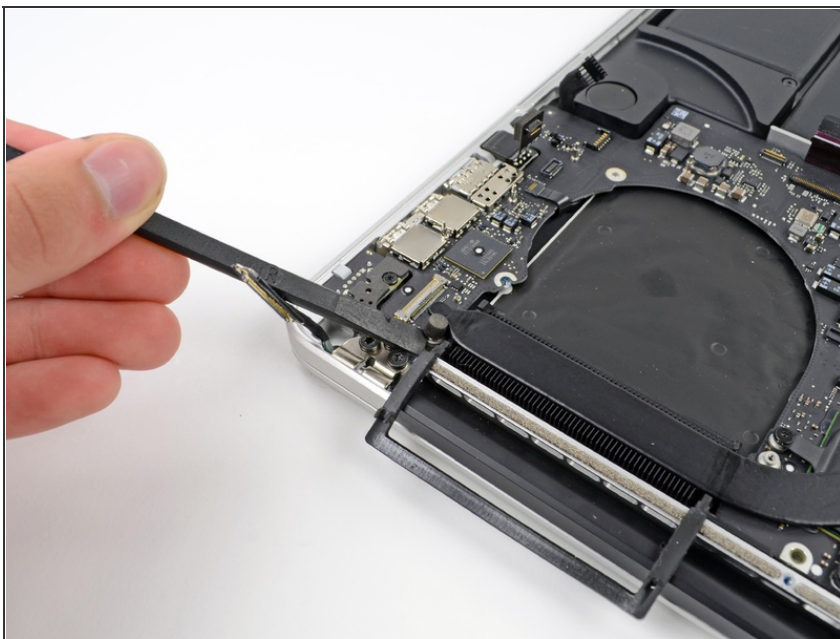
Step 7



- Use the tip of a spudger to pry the display data cable lock and rotate it toward the DC-In side of the computer.
- Pull the display data cable straight out of its socket on the logic board.
- Do not lift up on the display data cable, as its socket is very fragile. Pull the cable parallel to the face of the logic board.

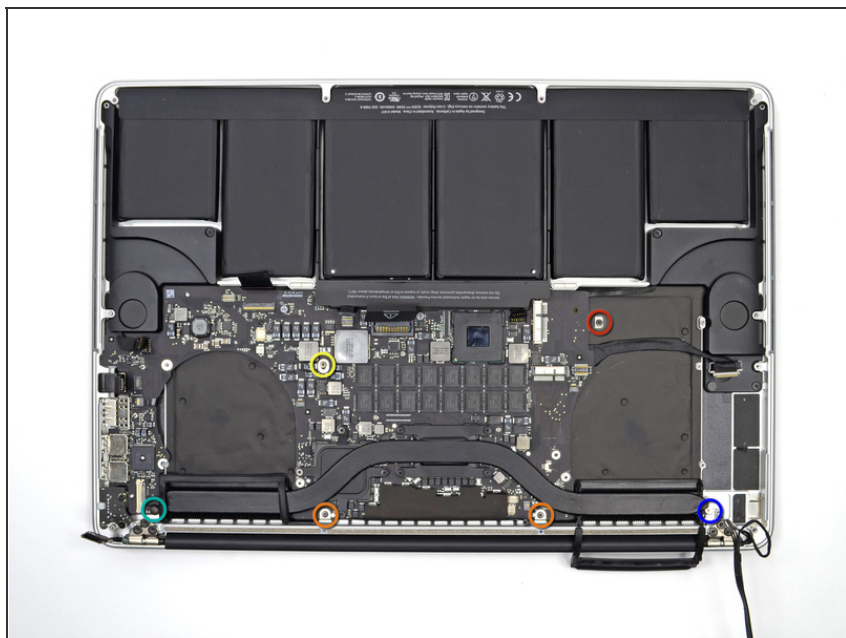


Step 8



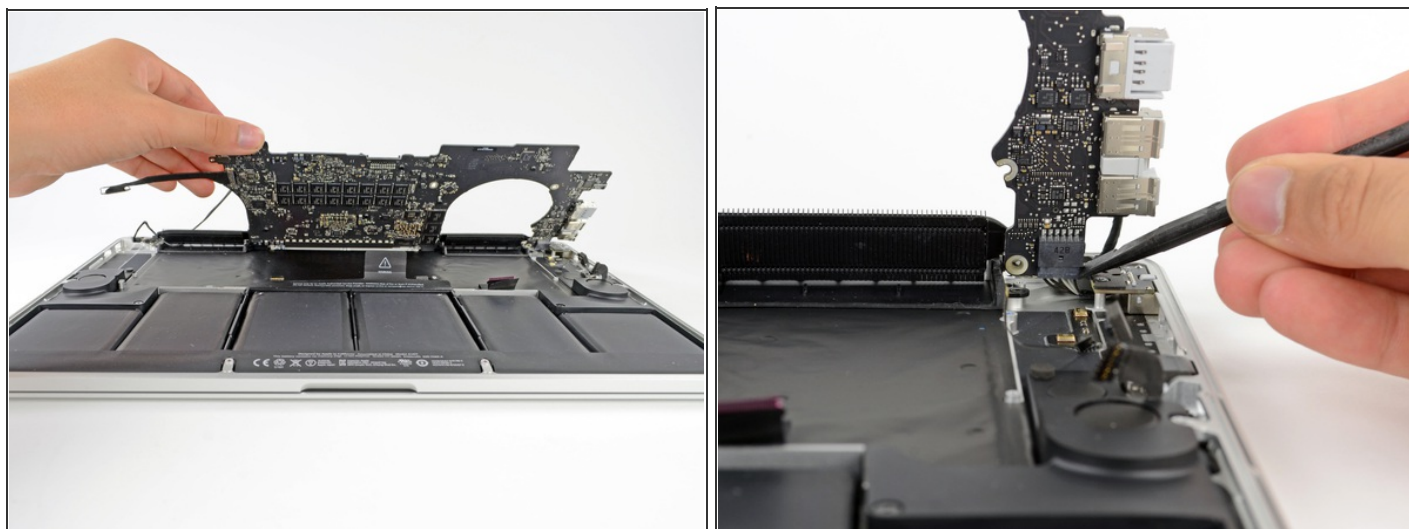
- Use the flat end of a spudger to carefully pry off the rubber screw cap on the raised screw head near to the MagSafe 2 connector.

Step 9



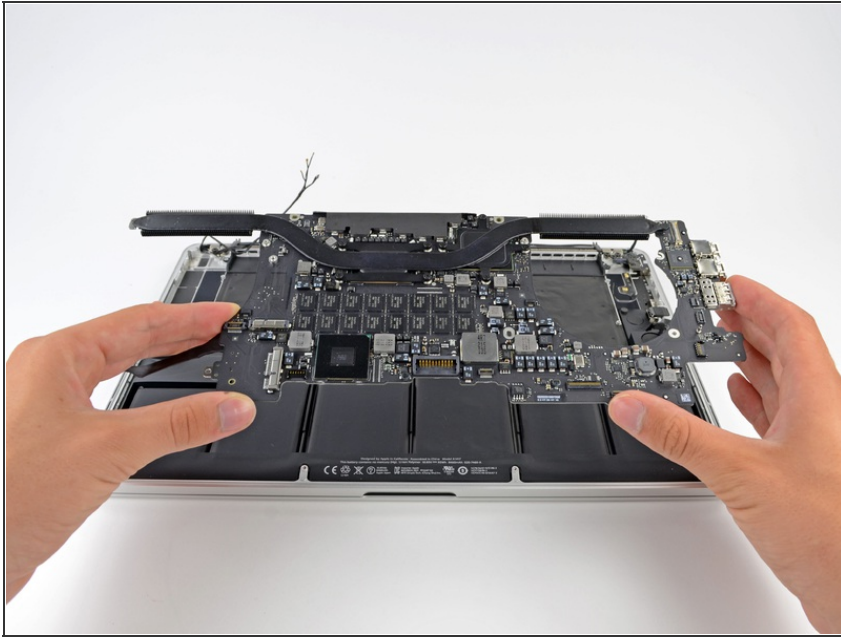
- Remove the following six screws securing the logic board to the upper case:
 - One 2.6 mm T5 Torx screw
 - Two 5.8 mm T5 Torx screws
 - One 3.8 mm T5 Torx screw
 - One 5.2 mm Raised Head T5 Torx screw
 - One 3.5 mm T5 Torx screw

Step 10



- Lifting from the side nearest the battery, rotate the logic board toward the top of the MacBook Pro.
- Using the flat end of a spudger, carefully push the MagSafe 2 connector out of its socket on the bottom of the logic board.

Step 11



- Remove the logic board assembly from the MacBook Pro.

To reassemble your device, follow these instructions in reverse order.

This document was last generated on 2012-11-27 05:37:24 PM.